

**IMPORTANT: Always use in a well-ventilated area, in accordance with safety recommendations provided with your propane supply.**

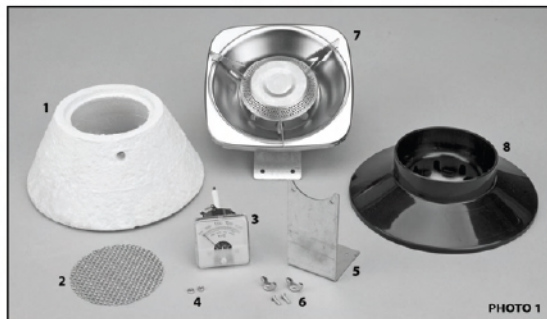
# Instructions for Setting up the SpeedFire™ Cone System

**NOTICE: PLEASE DO NOT ATTEMPT OPERATION UNTIL YOU HAVE READ ALL THE DIRECTIONS THOROUGHLY!**

## CONTENTS

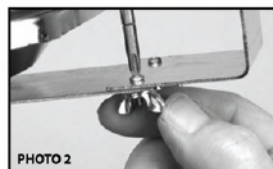
The carton you receive contains a SpeedFire™ Cone (1), round stainless steel mesh firing grid (2), pyrometer with probe (3), two nuts for attaching pyrometer to vertical pyrometer mounting bracket (4), vertical pyrometer bracket (5), two Phillips head screws with two wing nuts (6), carton containing stove with horizontal pyrometer bracket attached (7), fuel tank stabilizer base (8) PHOTO 1

You will need a Phillips head screwdriver and a pair of small pliers such as a needle nose type.



## BRACKET ASSEMBLY

Using the two Phillips head screws and wing nuts (6) mount the vertical metal pyrometer bracket to the horizontal part of the bracket connected to the stove as shown in PHOTO 2. The heads of the screws come in from the top of the horizontal bracket.



### PYROMETER/STOVE ASSEMBLY

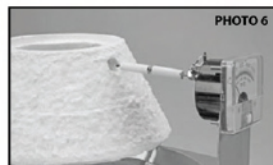
Using the lower set of screws on the back of the pyrometer meter face, insert them into the vertical bracket on the end of the bracket with the curved cutout. PHOTO 3. Use the two nuts (4) to attach the pyrometer to the bracket. PHOTO 4. DO NOT OVERTIGHTEN.



Screw the stove and pyrometer assembly to the top of your propane bottle. Be sure that the stove is screwed tightly to the bottle. Be sure that the plastic base that comes as a part of the propane fuel cylinder is firmly attached to the cylinder. Place the bottle with stove and pyrometer assembly attached into the black plastic fuel tank stabilizer base. Make sure that the fuel cylinder is pressed firmly into the fuel tank stabilizer base (8) and is perpendicular to the stabilizer base before operation. PHOTO 5



The propane cylinder we recommend is the small one pound capacity style with integrated plastic base. It should be readily available at any hardware or camping store.



### INSTALLING THE SPEEDFIRE™ CONE

Holding the SpeedFire™ cone level with the three burner supports, move the cone sideways so that the pyrometer sensor goes into the hole in the side of the cone near the top PHOTO 6. Looking down through the top of the cone, move it onto the stove top PHOTO 7 until the burner is placed as shown. PHOTO 8 (next page)

Lastly, place the round stainless steel mesh grid into the recess at the top of the SpeedFire™ cone. PHOTO 9 (next page)

## SAFETY FIRST! (Art Clay World, USA does not recommend firing Art Clay with organic materials on the SpeedFire™ Cone System.)

Use common sense when setting up and operating the SpeedFire™ Cone System. Since there is heat and flame involved be sure that you don't operate the SpeedFire™ Cone System in an area that would be conducive to fires being ignited in the case of an accident. Be sure to place the SpeedFire™ Cone System in a **well ventilated area** (especially when burning out organic materials) that allows for a minimum of 18" clearance on all sides, the top, and with no combustible



or flammable material especially above or in the surrounding area. As with any metal clay firing method, a significant amount of heat is radiating from the cone opening.

During firing, especially prolonged firings, metal surfaces can heat up so do not touch them until after the unit has cooled down completely. The gas regulator knob can also heat up somewhat so don't be surprised if it feels warm, however, adjustment during firing and turning the unit off should cause no discomfort.

### OPERATION

For maximum performance one pound fuel supply bottles should be at room temperature (70F° or higher). Lower fuel supply bottle temperatures will decrease BTU output of the stove and affect the ability of the stove to reach higher operating temperatures. Store one pound bottles in a warm environment. Larger fuel bottles such as the 20# barbecue pit size will operate correctly at temperatures lower than 70F°.

Before firing for the first time be sure that the pyrometer is reading room temperature (appx.75 F°). If it needs adjusting use the plastic screw on the face of the pyrometer to adjust to room temperature.

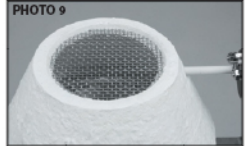
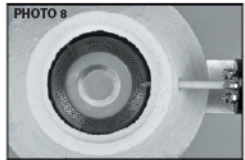
Place the metal clay objects to be fired on top of the stainless steel mesh grid. Insert an unlit butane match lighter between the cone and the top of the stove, ignite the butane lighter then open the valve slightly and light the burner. PHOTO 10

Open the stove valve a little at a time to adjust the temperature. The meter indicates the temperature. Keep in mind that you need to give the meter time to "catch up" if you make adjustments with the stove valve. To minimize fluctuations in firing temperatures, avoid firing your SpeedFire™ Cone in an area susceptible to drafts or strong movements of air.

Once the temperature is set, let the metal clay fire for the recommended time. Remember that the time at the proper temperature (or a higher temperature) is very important in sintering silver. We recommend that you not exceed 1650F° to insure that you do not approach the melting point of the metal clay. Keep an eye on the meter and make adjustments as necessary. The burning capacity of the stove is somewhat affected by the amount of fuel remaining in the bottle but the stove has a built in regulator that is designed to keep this fluctuation to a minimum. When you are unable to reach proper temperatures it is time to replace the fuel bottle or fire at a longer time at a lower temperature.

In a well lit area any flames resulting from opening the valve too much may not be visible above the screen. Use caution and open the valve only enough to maintain the proper temperature.

**FIRING AT ALTITUDE:** Your altitude above sea level may affect your ability to reach the higher temperatures indicated above, if this is the case in your location, fire for a longer time at one of the lower temperatures.



# SpeedFire™ Cone System Bulk Tank Adapter

*PLEASE DO NOT ATTEMPT OPERATION UNTIL YOU HAVE READ ALL THE SPEEDFIRE™ CONE SYSTEM DIRECTIONS THOROUGHLY!*

Now you can attach your SpeedFire™ Cone System to larger size propane tanks and achieve:

- Extended burn time - 60+ hours with a standard 20 lb tank
- Lower operating costs - as low as 60¢ an hour
- Consistent gas pressure and temperature for longer firings

With a standard 20 lb tank (as used for barbecue pits) you will achieve a burn time of 60+ hours! This size tank can be purchased at Sam's Club for \$21.22 and in our area it can be filled for \$12.00. This translates into an operating cost of only 60¢ an hour! Smaller more compact (and more expensive) tanks can be had in 11 and 4 lb sizes such as the one shown in the photograph.



**The Bulk Tank Adapter is available as a separate item. Ask your SpeedFire™ Cone System Distributor for details.**