

# Metal Clay World Conference



**August 23-25, 2007**

with Pre-Conference Classes August 20-22

Wednesday Night Kick-off Reception on August 22, 2007 at 6 p.m.



Art Clay Silver & UV Resin Ring  
by Jackie Truty

Image courtesy of F&W Publications  
As seen on the cover of *The Crafts Report*,  
February 2007 issue

**Don't miss the conference of the year in Las Vegas, NV!**  
This gathering will bring together Metal Clay artisans from around the world to share their knowledge and passion for this unique medium. Join us for a wonderful few days of learning, creating, and an all around good time!

Artist: Mary Hettmansperger



Artist: Cindy Gard



## Metal Clay World Conference

Art Clay World, USA, Inc., the exclusive importer and distributor of Art Clay Silver and Gold products in North America, would like to announce a terrific opportunity for your company.

We will be hosting an exciting new event in 2007, and invite your company to join us to make it a huge success! The **Metal Clay World Conference** will be held at the South Point Hotel and Casino in Las Vegas, from Wednesday, August 22, through Saturday, August 25, 2007. Beginning with a Wednesday evening *meet and greet* reception for all attendees, VIPs and instructors and moving on to three days where metal clay artists and enthusiasts from around the world will gather to attend educational events and workshops, shop at an exclusive marketplace, and network with their peers and experts in all fields of metal clay-related art and business.

For this, our first ever event of this magnitude, space will be limited to 500 registered attendees as well as the general public, who will be attending the Open Marketplace during the convention. We are determined to make this a biennial event, with the realistic goal of doubling attendance in 2009, and again in 2011.



Detail of "Orchid Cluster Necklace"  
Artist: Dawn Vertrees

# Metal Clay World

## Pre-Conference Classes



**Session:** “Advanced Polymer Clay Techniques for Metal Clay”

**Instructor:** Lisa Pavelka

**Price:** 1-day class, \$150 per person plus \$8 kit fee

**Date:** 8/20/07

Learn how to create a variety of polymer clay backfills for your custom made bezel settings. Included in this session are lessons in Makumé Gané, Millefiori, and Faux Dichroic Glass. All skill levels are welcome, but some previous experience with polymer clay will be helpful. Demonstration of backfilling technique along with discussion on various types of finishing and polishing methods will be covered. Students bring: a clay pasta machine with a “C” clamp, an acrylic rod/roller, X-acto type craft knife, clay blades.

[www.ce1.com/MCWC/](http://www.ce1.com/MCWC/)



**Session:** “Enameling on Metal Clay—Beginning”

**Instructor:** Pam East

**Price:** 1-day class, \$150 per person plus \$50 kit fee

**Date:** 8/20/07

Are you ready to start adding rich, permanent color to your metal clay work? Then, this workshop is for you! This hands-on class will teach you the fundamentals of enamel application and firing. Metal Clay experience required. Enameling experience NOT required. Students bring: several finished metal clay projects which will then be enameled in class.

(866) 381-0100

## Metal Clay World Pre-Conference Classes



**Session:** “Naupaka Brooch”

**Instructors:** Gordon Uyehara and Louise Duhamel

**Price:** 2-day class, \$350 per person plus \$69 kit fee

**Date:** 8/20/07–8/21/07

Create an inspiring Naupaka brooch while exploring design and construction fundamentals. See how a complex project can be broken down into a series of manageable steps. Design options and challenges will be discussed at key points in the construction process. Techniques to be demonstrated will include stenciling, shaping, refining, texturing, making and attaching tiny components and joining. Some experience with metal clay required. Students bring: pencil, paper, thin Sharpie marker, ruler, 2 good quality small pointed paint brushes (1 flat and 1 pointed), tweezers, craft knife or needle tool, rigid work surface, any of your favorite tools for metal clay, and a task light and magnifier (if needed).



**Session:** “Advanced Enamels on Metal Clay”

**Instructor:** Pam East

**Price:** 1-day class, \$150 (no kit fee)

**Date:** 8/21/07

If you've already tried a bit of enameling on your own, and are ready to kick it up a notch, this is the class for you. Topics will include counter enameling, champlevé finishing, trouble shooting common problems

and more. Metal Clay and enameling experience required. Students bring: several finished metal clay projects to be enameled in class.



**Session:** “Incorporating Fiber Techniques into Metal Clay”

**Instructor:** Mary Hettmansperger

**Price:** 2-day class, \$350 per person plus \$50 kit fee

**Date:** 8/21/07–8/22/07

Using copper sheeting, metal clay, soft fibers, and cold connections, students create several pieces of jewelry. Students will make several metal clay pieces the first day of class with intention of incorporating them with copper sheeting and other materials. Students will use both soft materials and wires with a variety of fiber techniques and cold connections on the second day to finish the pieces. Metalwork, wire work, patinas, and embossing on metal will also be covered. Also, found, recycled, dime store, industrial, beads and hardware items can be brought by students to help personalize the jewelry. Bring your imagination and fun stuff to create these one-of-a-kind pieces of jewelry.

## Metal Clay World Pre-Conference Classes

**Session:** “Beading & Metal Clay ~ Pure Silver Beaded Pendant”

**Instructor:** Maria Martinez

**Price:** 1-day class, \$150 per person plus \$85 kit fee

**Date:** 8/22/07

Combine the beauty of two mediums, metal clay and beads, to create a beautiful pendant necklace. Discover the art of metal clay through hands-on instruction by designing a decorative metal clay frame as a focal point. Learn skills in texture design, hand forming and all the basic techniques that make working with metal clay a great experience. Embellish the pendant with seed beads and pearls to complete the look. Learn the art of beading to create a luxurious hand-sewn necklace that can be used with this and many different pendant designs. Students bring: task light, magnifiers if needed, small scissors, paper and pencil.



**Session:** “PMC to Art Clay Crossover Class”

**Instructor:** Lorrene Davis

**Price:** 1-day crossover class \$200 per person plus \$210 kit fee

**Date:** 8/22/07

Learn how to make finished jewelry of a high-end jewelry store caliber. Class focuses on techniques such as use of 650 Low Fire Slow Dry to form a twisted frame over porcelain, use of Overlay Silver Paste, and more. Students completing the Crossover Class will receive a 35% discount off of Art Clay Silver series products from Art Clay World, USA. Students bring: copy of their PMC certificate, task light, magnifier, metal clay tools, tweezers, wooden ring mandrel, scissors, 35mm empty film canister and olive oil (hand lubricant) and a work surface.



# Metal Clay World Conference Presenters and their class titles:

The 2007 Metal Clay World Conference has selected an esteemed cadre of enthusiastic individuals to share their expertise. Presentations will be on a first-come basis (no pre-registration). Daily schedules will be provided with six classrooms, running sessions concurrently.

Charles Lewton-Brain

Jayne Persico

Lisa Pavelka

Maria Martinez

Lorrene Davis

Tamara Honomon

John Hohenshelt of Paragon Industries

Mary Hettmansperger

Stanley & Heather Micallef of S. Africa

Lyle Rayfield

Charles Lewton-Brain

Holly Gage

Sue Heaser

Jay Humphreys

Aida Chemical Industries Tech. Dept.

Gordon Uyebara

Pam East

Trish Jeffers-Zeh

Deb Jemmot

Deb Jemmot

Deb Jemmot

Kurt Madison

Kate Qualley Peterson

Louise Duhamel

Keynote Speaker

“Designing Fused Glass for Metal Clay”

“Kaleidoscope Caning”

“Integrating Metal Clay with Beading”

“Gemstones”

“How to Get Published”

“Keeping Your Kiln Healthy”

“Mixed Metal Techniques”

“Molds and More”

“Strategies for Successful Teaching”

“Photography Techniques”

“Unlocking the Mystery of Liver of Sulfur”

“Painting Pictures with Filigree Techniques”

“Metal Clay Veneer”

Special Demo by Mr. Ueeda

“Metal Clay Design—Thinking in Parts”

“Enameling on Metal Clay”

“Creating Artistic Treasures using Metal Clay with Ceramics”

“Cold Connections”

“Flex Shaft on Greenware”

“Soldering on Metal Clay”

“The Many Worlds of Overlay Paste”

“Gold, Gold, Gold – The Midas Touch!”

“Adding Color without a Kiln ~ Pencil, Resin & Vitrea”



Artist: Tammy Hooks



Detail of “Changing Seasons  
Artist: Jackie Truty



Artist: Cindy Gard

# Metal Clay World Conference

August 23–25, 2007

Las Vegas, NV

**Registration Price:** \$300 (\$265 for Art Clay Society Members)

**Registration Includes:** The opportunity to attend up to 12 different sessions, the Wednesday Night Kick-Off reception, attendance at the Keynote Speech, Breakfast and Lunch (Thur–Sat, 8/23/07–8/25/07), and access to the vendor showroom.

We also offer special room rates at the South Point Hotel and Casino; you can choose from a room with a single king-size bed or two queen-size beds. The rates are \$69 USD a night Sunday – Thursday and \$99 a night Friday and Saturday plus tax.

**Hotel Information:** Adjacent to I-15, the South Point acts as a gateway to Las Vegas for the millions of visitors traveling from Southern California. It is also conveniently located just 5 minutes from McCarran International Airport.

Cities of Southern California, such as Santa Barbara, San Diego, and Pasadena, inspired the South Point ambience. Its architectural details are reminiscent of the styles found along the Pacific coast.

Along with the gaming and entertainment amenities that made Coast Casinos sister properties Barbary coast, Gold Coast, The Orleans and Suncoast famous, the South Point features a complete Equestrian Complex set to open in 2006 and 150,000 sq. ft. of Convention, Exhibit and Banquet Space with the capacity to cater to groups of any size.

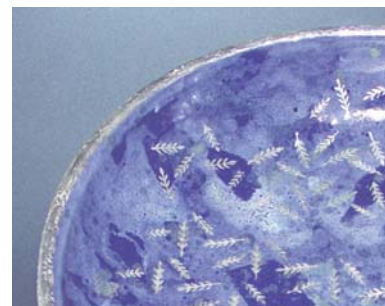
A leader in the business community, Coast Casinos and Boyd Gaming Group continues their commitment to improving the local economy for the city of Las Vegas. The South Point employs nearly 2,400 people and has created over 10,000 new jobs in the work force of Las Vegas.

**South Point Attractions:** First Floor: Silverado Steakhouse, Don Vito's Italian & Seafood Restaurant, Garden Buffet, 24-hour Coronado Café, Baja Miquel's Mexican Restaurant, Big Sur Oyster Bar, Kate's Korner, Seattle's Best, 80,000 Square Foot Casino, Race & Sports Book, Poker Room, Specialty Bars, Gift Shop & Liquor Store. Second Floor: 64-lane Bowling Center, Pro Shop/Snack Bar & Bowling Lounge, 600 Seat Bingo Room, Kid's Tyme Child Care Facility, Video Arcade, 16-screen Movie Theater Complex

Outside: Beautifully Landscaped Pool and Jacuzzi, Outdoor Activity Area, Free Shuttle to the Barbary Coast located in the Heart of the Las Vegas strip.



Image courtesy of Aida Chemical Industries, Inc.



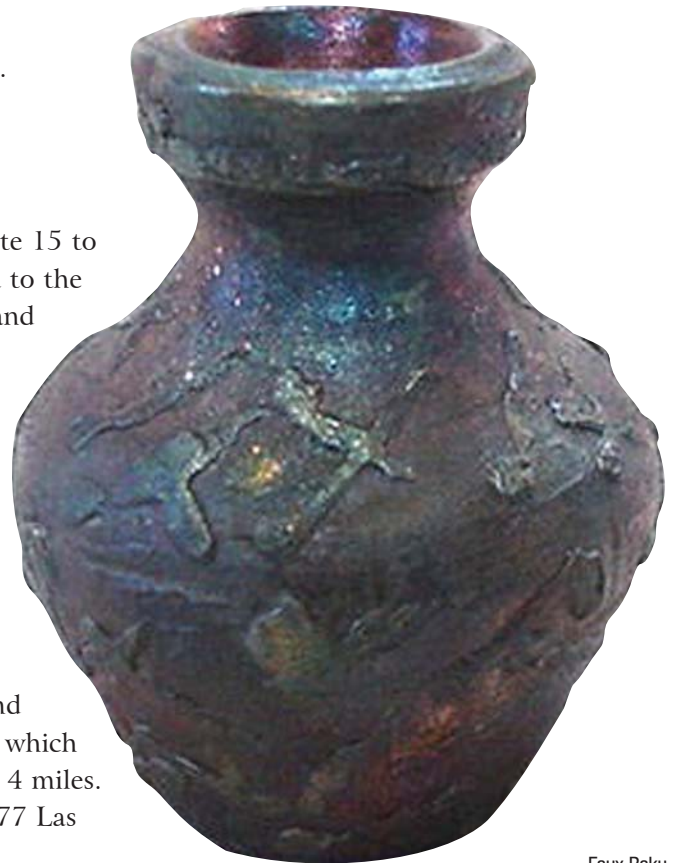
Detail of ceramic bowl with Art Clay Silver accents  
Artist: Jackie Truty

# Metal Clay World Conference

**Hotel Location:** Las Vegas Blvd. & Silverado Ranch Blvd.  
9777 Las Vegas Blvd. South  
Las Vegas, NV 89123  
(702) 796-7111

**Hotel Directions:** From California head North on Interstate 15 to State Route 146 (Exit 27) and exit to the right. Travel East to the first light which is Las Vegas Boulevard. Turn left (North) and travel approximately 3 miles. The South Point is located at 9777 Las Vegas Boulevard South on the left side (West) of the road. If you miss St. Rose Parkway (Exit 27), continue to the next exit, Blue Diamond Road, which is 8 miles further North. Exit to the right. Travel East to the first light which is Las Vegas Boulevard. Turn right (South) and travel about 2 and a half miles. The South Point will be on the right side of the road.

From the Airport follow the signs to Henderson and travel through the Airport connector tunnel. Move to the right and follow the signs that way Las Vegas. Exit at the second exit which is Las Vegas Boulevard. Turn left (South) and travel almost 4 miles. The South Point will be on the right side of the road at 9777 Las Vegas Boulevard South.



Faux Raku  
Image courtesy of Art Clay World, USA



Special Coupon for *Fired Arts & Crafts* readers!

**\$20 OFF**

**METAL CLAY WORLD CONFERENCE 2007  
REGISTRATION**

*with coupon code: FAC507*

Register online at <http://www.ce1.com/MCWC/>

**(866) 381-0100**

*Metal Clay World Conference MCWC sponsored by Art Clay World, USA - All Rights Reserved  
Coupon subject to availability - Coupon good for 2007 MCWC registration only - One \$20 off coupon code per registration  
Must enter coupon code at time of registration*

